



# Dr Radcliffe's School Newsletter

JULY 2025

**Message from Mr O'Malley:**

Dear Parents and families,

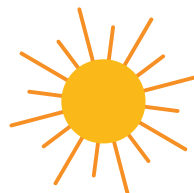


We have had an exciting and very warm term at Dr Radcliffe's.

Sports Day glory went to Evenlode House this year for winning the KS1 and to Isis for winning the KS2 sports day. We also enjoyed our Summer Day of Dance which was very well attended and was great fun. Well done also to our Year 5 Cricket Team who reached the County Finals at St Edwards' in Oxford recently - a great day out.



We have had Cally and Gill in from Cotswold Arts through Schools who did some excellent work with the children making patterned tiles. Our Summer Concert, led by Mrs Payne, was a most enjoyable evening with a wide range of music on offer, including from instrument ensembles and the choir.



With regard to Accelerated Reader, children have to date passed almost 1,100 tests on reading books and have read 2.6 million words since it was introduced this summer.



Thanks to all of you who have supported our JustGiving Page at Dr Radcliffe's C of E Primary School, Steeple Aston is fundraising for Oxford Diocesan Schools Trust (ODST) so that we can fund this initiative which costs over £2,000 per year.



We have 30 children on roll for our Reception Class for September which is great. The children have been in school, including for a Teddy Bears' Picnic and Stay and Play sessions.

We wish all those Year 6 children leaving us all the best for the future. They have had an excellent year and are well prepared for secondary school.

Initiatives for next year include getting a new sports coach in on Mondays and Fridays, including to run after school clubs, and getting our orchestra up and running again. We will also be involved in an ODST initiative around increasing attendance at school - Five Foundations - in an effort to reduce the number of children's absences from school. Our overall attendance figure for this year is 95.3% against our initial target of 96.0% and we are looking to improve it next year.

We would like to thank the Friends (our PTA) for all their work this year (and last). Their fundraising has enabled us to replace six interactive whiteboards over the last two years at a cost in the region of £2,000 each. This is a remarkable achievement and of great benefit to the children.

We would also like to thank Rev'd Harriet and the parishioners involved in our Open the Book Bible story assemblies each Tuesday. Thanks also to Lisa Boote and our Governing Body for all their support this year. Finally, thanks to all the children and you, the families, for all your work and support this year and we look forward to seeing you all in September.

## Farewells

We are sad to be saying goodbye to **Mr Lang** at the end of this year. We wish him all the best for the future and thank him for all he has done for school sport over the last two years.



THANK  
YOU

We will be saying farewell to **Mrs Sansom** at the end of this term, as she is leaving to pursue her dream of working in a library.

Allison has been at Dr Radcliffe's for over ten years, and in that time has worked in nearly every year group, as well as looking after children at Night Owls. We will all miss her expertise and gentle way with the children. We wish Allison the very best for this new chapter and thank her for everything she has given to the school over her time here.

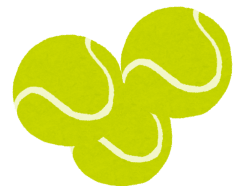
We are also saying goodbye to **Ms Sousa Vierra** who has been working at Night Owls this year, we have been very glad of her help and wish her the very best as she begins her teacher training in September.

# Year 5 Visit to the Mosque



Year 5 had an excellent trip to the Banbury Mosque on Wednesday 2<sup>nd</sup> July. Hannah said it was really fun and I learnt a lot. Freddie loved learning about how they prayed. Amelia said she learnt a lot about the 4 important books to Muslims. Samuel said it was a memorable, mesmerising experience. Dylan said it was a really peaceful experience and loved to visiting it yesterday. Mrs Roberts.

## Clubs for Next Year



Details of the clubs we have confirmed for next term can be found on the website. We will add new clubs as they become available and notify parents via email. We are currently in the process of organising piano and violin teachers and will be in touch with existing pupils as soon as possible. School sports clubs during and after school will be led by our new sports coach, Mr Read, from the company S4A S4A Club and letters about these new clubs will go out this week.



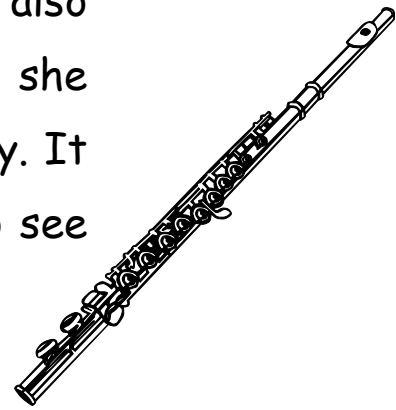
# A Special Musical Visit from Former Pupil Holly Viner

On Wednesday 2nd July, we were delighted to welcome back a former Dr Radcliffe's pupil, Holly Viner, who inspired us all with her exceptional violin playing.

Holly began learning the violin in Year 2 right here at Dr Radcliffe's and has since gone on to play with the prestigious National Youth Orchestra - a truly remarkable achievement!



During her visit, Holly led exciting workshops for Classes 2 and 3, sharing her skills and passion for music. She also visited other classes throughout the school, where she performed and spoke to pupils about her musical journey. It was a wonderful opportunity for our young musicians to see where dedication and enthusiasm can lead.



A huge thank you to Holly for taking the time to visit and inspire the next generation of performers!



# Eco Club

## How unsustainable palm oil effects wildlife

### What is palm oil?

Palm oil is a type of vegetable oil extracted from the oil palm tree. It is a globally significant oil used in food, cosmetics and even biofuels. Palm oil is a versatile ingredient used in a wide array of products, from food to Nutella it is in a wide range of stuff.

### Why is palm oil bad?

Palm oil is bad for the environment because, although palm oil can be produced sustainably, when it is not, rising consumption increases the risk of tropical rainforests being cut down to make way for plantations. Palm oil also effects loads of animals. This is why we should only use sustainable palm oil.

### What is sustainable palm oil?

Sustainable palm oil is palm oil that is produced with minimal negative impact on the environment and local communities.

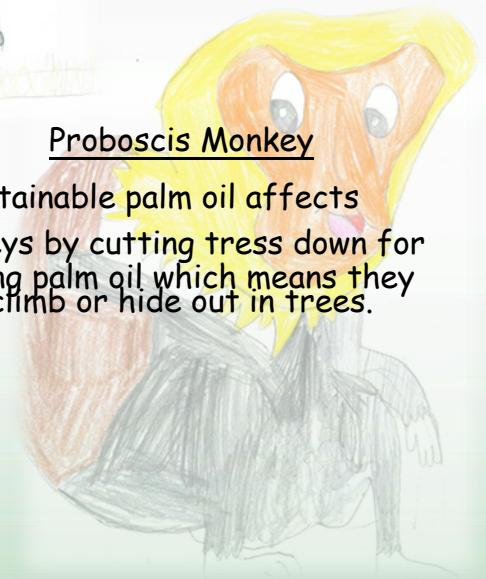
#### Elephants

The elephant population is crashing with far fewer than 3000 surviving as herds are left homeless, harassed and killed due to the intense conflict with people over shrinking habitats.



#### Proboscis Monkey

Unsustainable palm oil affects monkeys by cutting tress down for growing palm oil which means they can't climb or hide out in trees.



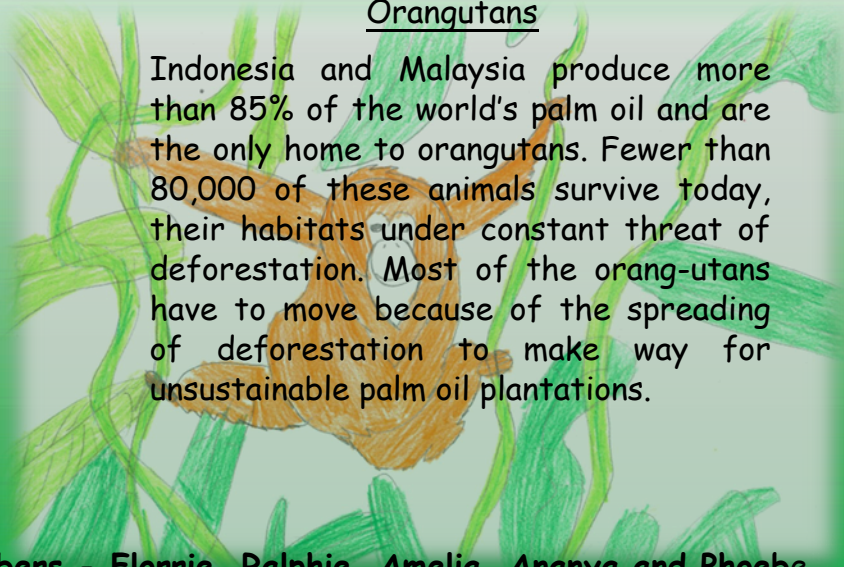
#### Tigers

Unsustainable palm oil affects tigers by people cutting down trees and then tigers can't hide out which makes it hard to catch prey.



#### Orangutans

Indonesia and Malaysia produce more than 85% of the world's palm oil and are the only home to orangutans. Fewer than 80,000 of these animals survive today, their habitats under constant threat of deforestation. Most of the orang-utans have to move because of the spreading of deforestation to make way for unsustainable palm oil plantations.



#### Hornbills

Palm oil affects hornbills by destroying their homes up in the trees. It impacts on their food sources and potentially causes direct harm if they ingest it.



# Growth mindset for transitions



It's that time of year when pupils prepare to transition to a new class or start secondary school. Change is a part of life, but at a young age, a sudden change of environment, friendship groups and familiar routines can induce feelings of anxiety, low esteem and overwhelm - impacting their mental health and wellbeing.

Around five students in a class of 30 experience mental health issues. It's important that the adults around them teach them the tools to develop emotional resilience and create safe and supportive spaces where children are seen and heard and feel that they belong. A great way to start is by teaching a growth mindset.



What is a growth mindset? A growth mindset involves feeling fear and viewing difficult situations as a springboard to develop new skills, regulate emotional states and grow in confidence over time. It encourages children to explore a broader perspective, believe in themselves, gain resilience and persevere rather than give up if things get tough.



In contrast, a fixed mindset focuses on being 'good' at challenging activities the first time, even when we cannot control the outcome. This may involve having a negative bias when things go wrong with statements like 'I'm not good enough' and avoiding tasks for fear of making mistakes.

Research from Dr Carol Dweck indicates that having a growth mindset heightens children's ability to tackle life challenges rather than attempt to avoid them. This improves self-esteem and behaviour and helps children to understand their emotions during big life changes.

Please see our [website](#) for the full article, more information and resources.

# School Health Nurses

School health nurses are specialist public health nurses who are based in state schools across Oxfordshire. We work closely with children, young people and their families to support and promote health and wellbeing. We often work alongside school safeguarding and multi-agency professionals to keep children and young people safe and well. Our team is made up of qualified nurses and school nurse assistants.

Our team can also work with children with Special Educational Needs and/or Disability who attend the schools we cover.

There is a parent line and a text service that can be used.

## Church Services



**July 20th - Holy Communion - North Aston**

9.30am, Steeple Aston 11.00am,

Choral Evensong and dedication of new organ

Tackley 5.30pm

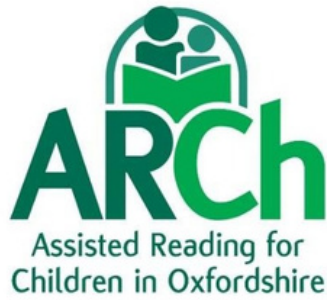


**July 27th - Morning Prayer - North Aston**

9.30am, Steeple Aston 11.00am,

Family Communion - Tackley 9.30am





# Could you help a child to enjoy reading and change their life forever?



## Volunteers needed in Oxfordshire primary schools

All it takes is one and a half hours twice a week during the school day as an ARCh volunteer.

Sandra Selby, who volunteered with ARCh said of her experience ***“I always leave school with a smile on my face. ARCh is a very rewarding charity to work with and the ARCh back-up team supports volunteers so well.”***

**Full training, ongoing support and travel expenses are provided.**

**[www.archoxfordshire.org.uk](http://www.archoxfordshire.org.uk)**

**Tel 01869 320380**

ARCh is committed to Safeguarding and this role is exempt from ROA 1974 and eligible for enhanced DBS certificate/barred list check

Registered Charity Number 1146276



# Oxford Opera

# SUMMER CAMP 2025

MON 4-FRI 8  
AUGUST

A Magical Week of Music, Drama & Fun  
for children aged 8-13

## Adventures with Hänsel & Gretel

Join Hansel and Gretel on a summer adventure into the enchanted forest!

Explore Humperdinck's beautiful opera through singing, dancing, drama, and arts & crafts.

Take part in the witch's obstacle course, Gretel's games, and Hansel's treasure hunt.

At the end of the week, perform your own version of the opera on stage for family and friends!

To book visit [www.oxfordopera.uk](http://www.oxfordopera.uk)

For any questions email Catie at:  
[education@oxfordopera.uk](mailto:education@oxfordopera.uk)

**WHEN:** Mon 4-Fri 8  
August 2025  
10am-4pm daily

**WHERE:** Dr Radcliffe's C of E  
Primary School, Fir Lane,  
Steeple Aston, OX25 4SF

**WHO:** Ages 8-13

Led by Oxford Opera's Education  
Director Catie Simpson and  
Guy Brigg MBE

**COST:** £48 per day  
/ £195 full week

Early Bird (before 4 July):  
£42 per day / £182  
full week

Sibling discounts and  
bursaries available



# Deddington Town FC Under 8s - player availability for 2025/6 season

We are pleased to say that our new Under 8 team who will play in the Witney & District Youth Football League from this September, and we have a few places for new players.

The team train on the All-Weather Court at the Windmill Centre on Deddington on Tuesdays between 18.00-19.00, and play matches on Saturday mornings at 10.30 at the Windmill Centre in Deddington.

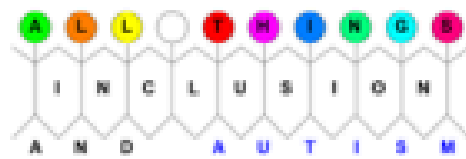
We are a well-established grass roots club with a friendly and welcoming approach for players and parents. For more information contact Richard Lydiatt on 07530 271043 or by email: [lydiatt4@aol.com](mailto:lydiatt4@aol.com)



## Six weeks of reading challenges for the summer holidays

During the long summer holidays we know that many children won't be choosing to read - and we also know that when they go back to school in September, six weeks of missed reading can make a huge difference to how quickly they settle back into their school work.

We've come up with some challenges which are aimed at helping families to find fun ways of sharing books together as an activity. With something to suit everyone of any age, and accompanying book recommendations to explore in the library, we hope children will enjoy reading to play it, make it, tell it, find it, draw it and do it!



## The Attention Autism Programme

### Two day face to face training

The complete training package taught by 2 Attention Autism Advanced Practitioners (Julie Mellor and Jaci Smith). This covers stages 1 - 4 of the Attention Autism programme, equipping you to run this intervention within Early Years in your setting or school. Parents are also very welcome.

**Dates: Thursday 20th and 27th November 2025**

**9am - 4pm**

**Price: £240 per person**

A certificate is provided on completion.

**Venue: 1st Ickenham Scout Hut, Community Close, Ickenham, Middx, UB10  
8RE**

For more information please call Jaci or Nikki on 01895 649211  
or email us at [allthingsautism ltd@gmail.com](mailto:allthingsautism ltd@gmail.com)

**Book via BookWhen**

**<https://bookwhen.com/juliemellor#focus=ev-sxt9-20251120000000>**

**If you'd prefer to be invoiced and pay by BACS please get in touch.**



**<http://allthingsinclusionandautism.com>**

**PAY BY  
CHILDCARE  
VOUCHERS**

**ULTIMATE  
ACTIVITY  
CAMPS**

# **GET SET FOR ULTIMATE HOLIDAY FUN!**



**SEE  
ONLINE  
FOR  
LATEST  
OFFERS!**

**Outstanding activity day camps for 4 to 14 year olds from  
8am to 6pm during the Summer holidays**

**BEACHBOROUGH SCHOOL, BRACKLEY**

**book now at [ultimateactivity.co.uk](https://ultimateactivity.co.uk)**

**OFSTED REGISTERED • FLEXIBLE BOOKINGS • MON - FRI | 8AM - 6PM**



# ROSIE CLARK

TENNIS COACHING : PLAY YOUR GAME

## BANBURY TENNIS CLUB

### Summer 2025 Coaching Programme

#### **Mondays** from 28/04

9:30-11AM Coaching Morning (adults & teens) **NEW**  
5:15-6:15PM Junior Improvers (10+) **NEW**  
6:15-7:15PM Beginners (adults & teens)  
7:15-8:15PM Improvers (adults & teens)

#### **Wednesdays** from 23/04

4-5PM Red Beginners/Improvers (ages 4-6)  
5-6PM Orange Beginners/Improvers (ages 7-9)  
6-7PM Junior Beginners (ages 10+)

#### **Thursdays** from 24/04

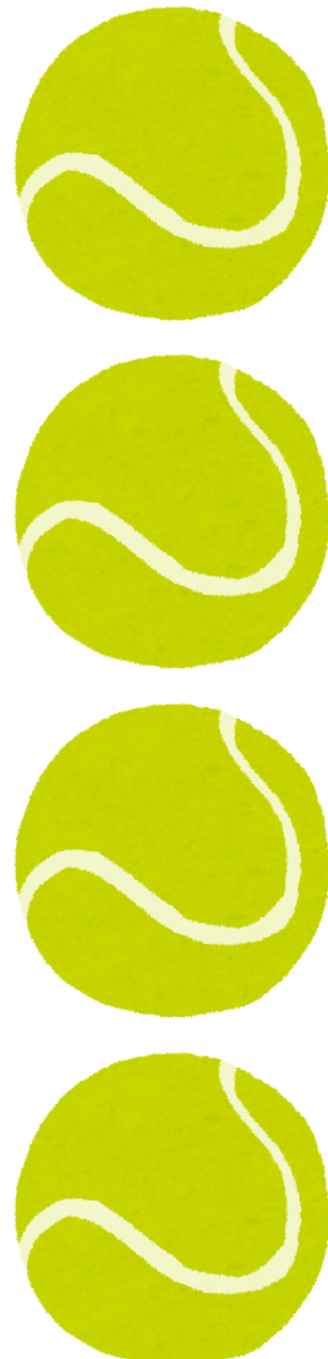
9:30-10:30AM Cardio Tennis (adults & teens)

#### **Saturdays** from 26/04

9-10AM Red Beginners/Improvers (ages 4-6)  
9-10AM Junior Beginners (ages 10+)  
10-11AM Orange Beginners/Improvers (ages 7-9)  
10-11AM Junior Improvers (ages 10+)  
11-11:45AM Tots (ages 2-4) **NEW**  
11AM-12PM Junior Advanced Improvers (ages 13+)

**BANBURY TENNIS CLUB, HORTON VIEW, BANBURY OX16 9HR**

[WWW.ROSIECLARKTENNISCOACHING.CO.UK](http://WWW.ROSIECLARKTENNISCOACHING.CO.UK) 07774 524780 [INFO@ROSIECLARKTENNISCOACHING.CO.UK](mailto:INFO@ROSIECLARKTENNISCOACHING.CO.UK)



## GIRLS CRICKET HUB

#### WHERE?

BANBURY CRICKET CLUB  
WHITE POST ROAD



#### WHEN?

EVERY WEDNESDAY FROM  
16TH APRIL TO MID-AUGUST  
17:30 - 18:30

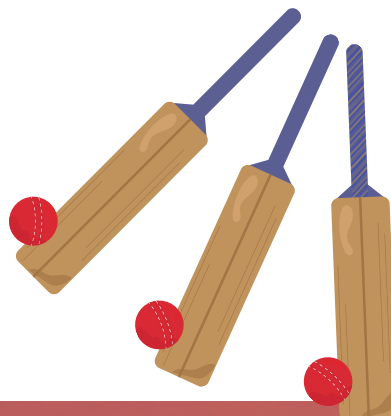
OPEN TO  
SCHOOL  
YEARS 3-8

#### OPTIONS?

FREE TO CURRENT YOUTH  
MEMBERS  
£10 NON-MEMBER FEE  
FOR FULL SEASON

#### BOOKING?

KAREN CROSS - [karencross@live.co.uk](mailto:karencross@live.co.uk)  
MATT ACTON - [macton@hardide.com](mailto:macton@hardide.com)



## BLOXHAM SCHOOL TENNIS CLUB

### Summer 2025 Coaching Programme

#### **Sundays** from 27/04

9-10AM Red Beginners (ages 4-5)  
9-10AM Orange Beginners/Improvers (ages 7-9)  
10-11AM Red Improvers (ages 5-6)  
10-11AM Junior Beginners/Improvers (ages 10+)  
11AM-12PM Junior Advanced Improvers (ages 13+)  
11AM-12PM Cardio Tennis (teens & adults)

**BLOXHAM SCHOOL, BANBURY RD, BLOXHAM, BANBURY OX15 4PE**

[WWW.ROSIECLARKTENNISCOACHING.CO.UK](http://WWW.ROSIECLARKTENNISCOACHING.CO.UK) 07774 524780 [INFO@ROSIECLARKTENNISCOACHING.CO.UK](mailto:INFO@ROSIECLARKTENNISCOACHING.CO.UK)

